

## Square Dual Load Wireless Switch Installation Guide




### Introduction

The Control4® Square Dual Load Wireless Switch operates independently or as part of a Control4 home automation system. It installs in a standard square (UK/China-style) wall box using typical wiring standards and communicates to the Control4 system using a wireless connection.

- IMPORTANT!** This device must be installed in a standard square UK/China-style single-gang wall box and use a single-gang EU faceplate. It *cannot* be installed in a round EU-style wall box or in multi-gang boxes.

### Box contents

- Square Dual Load Wireless Switch
- *Square Dual Load Wireless Switch Installation Guide* (this document)
- M3.5 machine screws (2) 
- M4.0 machine screws (2) 

### Specifications and supported load types

<b>Model numbers</b>	C4-SDSW240-N
<b>Power requirements</b>	230VAC +/-10%, 50/60 Hz This device requires a neutral connection.
<b>Power consumption</b>	950mW
Load types and ratings	
<b>Supported load types</b>	Incandescent, halogen, electronic (solid state) low-voltage (ELV) transformer, magnetic (iron core, inductive) low-voltage (MLV) transformer, compact fluorescent, LED, and motor.
Maximum load per output	
<b>Incandescent (tungsten)</b>	4A
<b>Halogen</b>	4A
<b>Fluorescent</b>	3A
<b>Compact fluorescent (CFL)</b>	3A
<b>LED</b>	1A
<b>MLV</b>	2A
<b>ELV</b>	2A
<b>Motors</b>	1/8 HP

Environmental	
<b>Operational temperature</b>	0°C - 40°C (32°F - 104°F)
<b>Humidity</b>	5% to 95% non-condensing
<b>Storage</b>	-20°C - 70°C (-4°F - 158°F)
Miscellaneous	
<b>Control communications</b>	ZigBee, IEEE 802.15.4, 2.4 GHz, 15-channel spread spectrum radio
<b>Wires per connector</b>	One 0.5 mm <sup>2</sup> - 2.5 mm <sup>2</sup> OR Two 0.5 mm <sup>2</sup> - 1.5 mm <sup>2</sup>
<b>Dimensions</b>	81 × 81 × 30 mm (3.2 × 3.2 × 1.2 in.)
<b>Depth in wall box</b>	25.8 mm (1.0 in)
<b>Weight</b>	0.113 kg (0.25 lb)
<b>Shipping weight</b>	0.159 kg (0.35 lb)

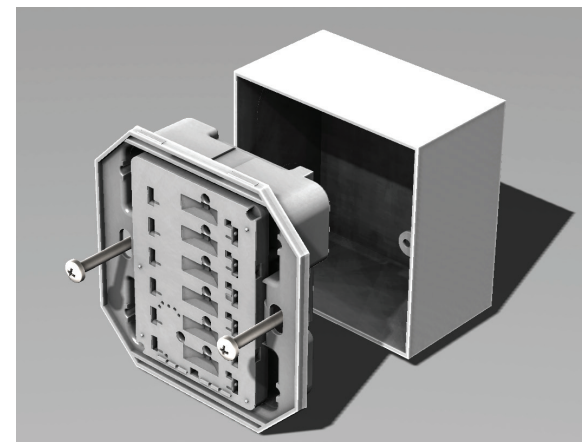
### Warnings and considerations

- WARNING!** Turn OFF electrical power before installing or servicing this product. Improper use or installation can cause SERIOUS INJURY, DEATH or LOSS/DAMAGE OF PROPERTY.
- WARNING!** This device must be protected by a circuit breaker (20A max).
- IMPORTANT!** This device must be installed by a licensed electrician in accordance with all national and local electrical codes.
- IMPORTANT!** This device requires a standard square UK/China-style wall box. It cannot be installed in a round EU style wall box.
- IMPORTANT!** Use this device only with copper or copper-clad wire. Do not use aluminum wiring. This product has not been approved for use with aluminum wiring.
- IMPORTANT!** To reduce the risk of overheating and possible damage to other equipment, do not install to control a receptacle or a motor operated appliance.
- IMPORTANT!** Using this product in a manner other than outlined in this document voids your warranty. Further, Control4 is NOT liable for any damage incurred with the misuse of this product. See "Troubleshooting."
- IMPORTANT!** Do NOT use a power screwdriver to install this device or to tighten wire screw terminals. If you do, you may overtighten the screws and strip them. Also, overtightening the screws may interfere with proper button operation.
- IMPORTANT!** This is an electronic device with intricate components. Handle and install with care!
- IMPORTANT!** Control4 does not guarantee the performance of any bulb or lamp/fixture in your environment. CUSTOMER ASSUMES ALL RISKS, INCLUDING ANY DAMAGE TO CONTROL4 PRODUCTS, ASSOCIATED WITH (i) THE TYPE, LOAD RATING AND QUALITY OF THE BULB AND LAMP/FIXTURE, OR (ii) ANY USE OR INSTALLATION NOT IN ACCORDANCE WITH THE DOCUMENTATION FURNISHED BY CONTROL4, EITHER WITH THE CONTROL4 PRODUCT OR AT WWW.CONTROL4.COM.

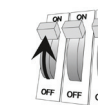
### Installing the switch

- Ensure that the location and intended use meet the following criteria:
  - Do not exceed the load capacity requirements of the switch. Refer to the load ratings in the specifications above for details.
  - Install in accordance with all national and local electrical codes.
  - The range and performance of the wireless control system is highly dependent on the following: (1) distance between devices; (2) layout of the home; (3) walls separating devices; and (4) electrical equipment located near devices.
- Turn off the mains electrical power at the consumer unit. To ensure the wires do NOT have power running to them, use an inductive voltage detector.
- Prepare each wire. Wire insulation should be stripped back 7 mm from the wire end.
- Identify your wiring application, and then see the appropriate wiring diagram in the "Sample wiring configurations" section below.
- Connect the switch to the wall box wires as shown in the applicable wiring diagram. Tighten screw terminals to 4 kg-cm.
- Fit the wires into the wall box.
- Align the switch to the wall box as shown in Figure 1 (note the UP orientation arrow on the switch), then fasten the switch to the wall box using the included M3.5 machine screws (UK-style wall box) or M4.0 machine screws (China-style wall box).

Figure 1: Square wall box installation



- IMPORTANT!** Tighten the screws until the device is flush with the wall surface, but no further. Overtightening can warp the switch and cause it to malfunction.
- Attach the buttons (sold separately) as described in the *Keypad Button Installation Guide*.
  - Install the Control4 Faceplate (sold separately) by placing the top of the faceplate on the device (note the UP orientation arrow on the inside of the faceplate) and firmly pressing the bottom until the faceplate snaps into place against the wall.
- Note:** To remove the faceplate, use a flathead screwdriver. Insert the screwdriver into the small gap on the bottom between the faceplate and the device, then twist the screwdriver blade to pop the faceplate off.
- Turn ON mains electrical power at the consumer unit.



### Operating the switch

On initial power up, all status LEDs on the switch will illuminate green, indicating that the device has power. To set up this switch for use with a Control4 system, refer to the *Composer Pro User Guide* ([ctrl4.co/cpro-ug](http://ctrl4.co/cpro-ug)).

To operate this switch as a stand-alone device before configuring in Composer Pro or Composer Express:

- Any button in the top half of the keypad will toggle load 1 on and off.
- Any button in the bottom half of the keypad will toggle load 2 on and off.

### Button tap sequences

The button tap sequences are defined in the table below. Button tap sequences that require a single button should use the top-most button installed on the switch. Button tap sequences requiring two buttons should use the top-most and bottom-most buttons installed on the switch.

Function	Button tap sequence
<b>Identify</b>	4
<b>ZigBee channel</b>	7
<b>Reboot</b>	15
<b>Factory reset</b>	9-4-9
<b>Leave mesh and reset</b>	13-4-13

### Troubleshooting

If the light does not turn on:

- Ensure that at least one LED on the face of the switch is lit.
- Ensure that the light bulb is not burned out and is screwed in tightly.
- Ensure that the circuit breaker is not turned OFF or tripped.
- Check for proper wiring (see "Sample wiring configurations"). If the Line and Neutral wires are reversed, the light will be on while the switch is off, and vice versa.
- For help on the installation or operation of this product, email or call the Control4 Technical Support Center. Please provide your exact model number. Contact [support@control4.com](mailto:support@control4.com) or see the web site [www.control4.com](http://www.control4.com).

### Care and cleaning

- Do NOT paint the switch or its wall plate.
- Do NOT use any chemical cleaners to clean the switch.
- Clean surface of the switch with a soft damp cloth as needed.

**Additional resources**

The following resources are available for additional support:

- Control4 Knowledgebase and forums
- Control4 Technical Support
- Control4 website: [www.control4.com](http://www.control4.com)
- Composer documentation available at [ctrl4.co/docs](http://ctrl4.co/docs).

For the latest version of this document, open this URL or scan the QR code on a device that can view PDFs.



**Sample wiring configurations**

Figure 2: Single device location

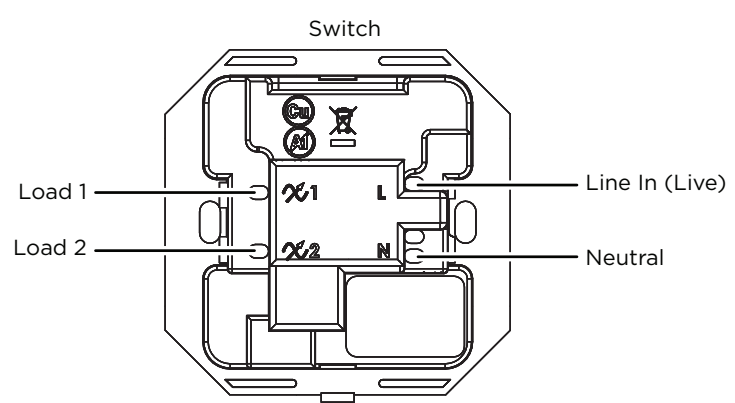
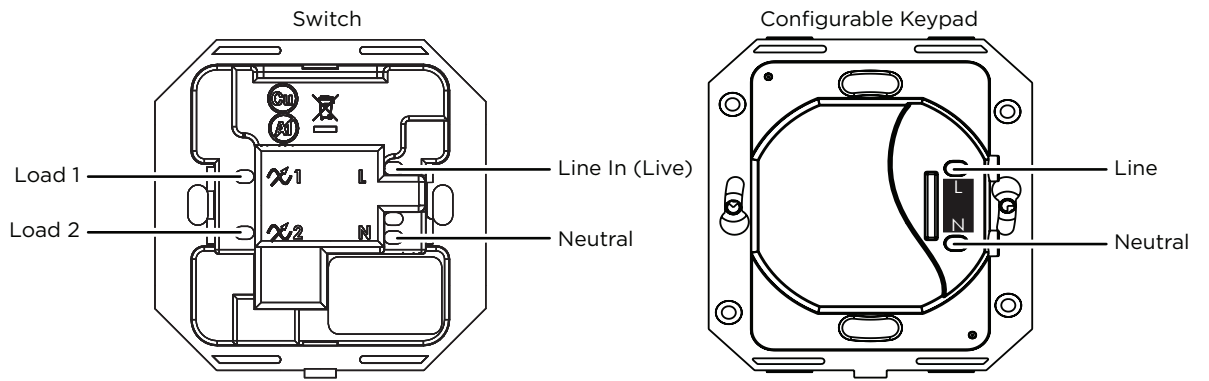


Figure 3: Multiple device locations using Configurable Wireless Keypad



**Note:** For additional details on multi-way wiring, refer to the *Wiring Guide for EU Two-way Switching* document ([ctrl4.co/2waywiring](http://ctrl4.co/2waywiring)).

**Regulatory/Safety information**

To review Regulatory information for your particular Control4 products, see the information located on the Control4 website at [ctrl4.co/reg](http://ctrl4.co/reg).

**Patent information**

Applicable patents are available at [ctrl4.co/patents](http://ctrl4.co/patents).

**Warranty**

Visit [ctrl4.co/warranty](http://ctrl4.co/warranty) for details.



Copyright ©2019, Control4 Corporation. All rights reserved. Control4, Pakedge, Triad, and their logos are registered trademarks or trademarks of Control4 Corporation in the United States and/or other countries. 4Store, 4Sight, Control4 My Home, Mockupancy, and BakPak are also registered trademarks or trademarks of Control4 Corporation. Other names and brands may be claimed as the property of their respective owners. All specifications subject to change without notice.