



# STARVIS Range

## What is STARVIS?



The Sony STARVIS sensor uses a back-illuminated pixel technology to provide clear, high quality colour images in ultra-low light environments. Even in well lit areas with multiple light sources, STARVIS cameras can provide a clearer image than their non-STARVIS counterparts, and adapt to light and weather conditions. LILIN's P2 and Z2 cameras provide this technology in either 1080P or 5MP resolution.

## Education:

LILIN have created two 30 minute webinars to provide an overview of the STARVIS product range and highlight the most important new technical features.

Introduction to STARVIS:



This introduction covers STARVIS, H.265 compression, and the range of models available in the UK.

STARVIS Technical Highlights:



This webinar looks at technical features including multiple streams, adjustable IR and Smart Alarms.



Creativity  
Progress &  
Excellence

01908 443 663  
contact@lilin.uk  
meritililn.com

CEDIA MEMBER



## Internal Domes:

**P2R3022AE2**



- 1080P
- 2.8mm
- 30M IR
- 30FPS
- IVS

**P2R3052AE2**



- 5MP
- 2.8mm
- 30M IR
- 25FPS
- IVS

## External Domes:

**P2R6322AE2**



- 2MP
- 2.8mm
- 30M IR
- 30FPS
- IVS

**P2R6352AE2**



- 5MP
- 2.8mm
- 30M IR
- 25FPS
- IVS

**Z2R6422AX-P**  
*Motorized Zoom/Auto Focus*



- 2MP
- 2.8-12mm
- 30M IR
- 30FPS
- IVS

**Z2R6452AX-P**  
*Motorized Zoom/Auto Focus*



- 5MP
- 2.8-12mm
- 30M IR
- 25FPS
- IVS

**P2R6822E2**



- 2MP
- 2.8mm
- 30M IR
- 30FPS
- IVS + Mic

**P2R6852E2**



- 5MP
- 2.8mm
- 30M IR
- 25FPS
- IVS + Mic

CEDIA MEMBER

## Turrets:

**Z2R6522X**  
Motorized Zoom/Auto Focus



- 2MP
- 2.8-8mm
- 30M IR
- 30FPS
- IVS

**Z2R6522X**  
Motorized Zoom/Auto Focus



- 5MP
- 2.8-8mm
- 30M IR
- 25FPS
- IVS

**Z2R6522XK**  
Motorized Zoom/Auto Focus



- 2MP
- 2.8-8mm
- 30M IR
- 30FPS
- IVS

**Z2R6522XK**  
Motorized Zoom/Auto Focus



- 5MP
- 2.8-8mm
- 30M IR
- 25FPS
- IVS

## Accessories:

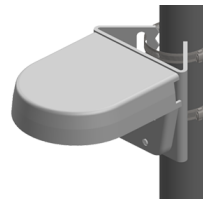
The below accessories are compatible with all domes/turrets except the P2R6822E2/P2R6852E2.



BCR03W/BCR03K  
Circular Junction Box  
in White or Black

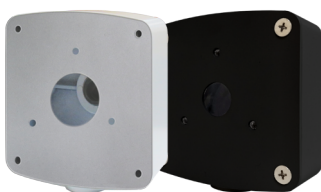


BTD04W  
'L' Shaped  
White Wall Bracket



BTR08W  
Pole Adaptor, to be  
used with BTD04W

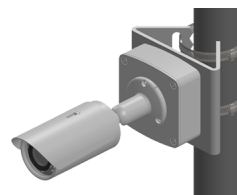
The below junction boxes are for bullet cameras; Z2R8022EX25/Z2R8052EX25 comes with integrated junction box.



BTD02W/BTD02K  
Bullet Junction Box  
in White or Black



BCR02W  
Junction Box for Long  
Distance IR Bullets



BTR08W  
Pole Adaptor, to be  
used with BTD02W  
or BCR02W



Creativity  
Progress &  
Excellence

contact@lilin.uk  
01908 443 663  
meritlilin.com

CEDIA MEMBER





## Bullets:

---

**Z2R8822AX**  
*Motorized Zoom/Auto Focus*



- 2MP
- 2.8-8mm
- 30M IR
- 30FPS
- IVS

**Z2R8852AX**  
*Motorized Zoom/Auto Focus*



- 5MP
- 2.8-8mm
- 30M IR
- 25FPS
- IVS

## Long Distance IR Bullets:

---

**Z2R8122X-P**  
*Motorized Zoom/Auto Focus*



- 2MP
- 2.8-12mm
- 40M IR
- 30FPS
- IVS

**Z2R8152X-P**  
*Motorized Zoom/Auto Focus*



- 5MP
- 2.8-12mm
- 40M IR
- 25FPS
- IVS

**Z2R8122X2-P**  
*Motorized Zoom/Auto Focus*



- 2MP
- 7-22mm
- 40M IR
- 30FPS
- IVS

**Z2R8152X2-P**  
*Motorized Zoom/Auto Focus*



- 5MP
- 7-22mm
- 40M IR
- 25FPS
- IVS

**Z2R8022EX25**  
*Motorized Zoom/Auto Focus*



- 2MP
- 5.3-130mm
- 100M IR
- 30FPS
- IVS

**Z2R8052EX25**  
*Motorized Zoom/Auto Focus*



- 5MP
- 5.3-130mm
- 100M IR
- 25FPS
- IVS

## Low Bandwidth:

All P2 and Z2 series models are H.265 compatible, which will allow you to stream with half the bandwidth of H.264 whilst maintaining the same video quality.



H.264



H.265



This will reduce the amount of storage required- providing you with double the recording time!

30 days storage for 1 x 2MP camera, calculated at 3Mbps, 30FPS\*



H.264



H.265



\*Estimate only, recording will depend on H.264/H.265 compression as frame sizes can vary.

## PoE NVRs:

Available as 4, 8 or 16 channel units, LILIN's range of PoE NVRs are well suited to P2 and Z2 cameras. With a recording resolution of up to 4K, these H.265 compatible NVRs include a built in PoE switch to create a seamless plug and play solution that can be set up- from box to app- in under 8 minutes!



Model No	Channels	Power Budget	PoE Standard	FPS	Max Recording Resolution	Internal HDD Bays	Max Storage
NVR5104E	4	57W	802.3af*	120	4K	1	8TB
NVR5208E	8	72W	802.3af*	240	4K	2	16TB
NVR5416E	16	222W	802.3af	480	4K	4	32TB

\*11W maximum per channel

Automatic configuration of a connected camera's IP address will save the installer valuable time; use the free P2P connection to provide secure remote viewing via the new LILINHome App.



Merit LILIN UK Limited, Davy Avenue, Knowlhill, Milton Keynes, MK5 8NB.

01908 443 660

contact@lilin.uk

www.meritlilin.com