



# Loewe **klang bar3 mr**

Soundbar with integrated subwoofer

Active 3.1 Dolby Atmos soundbar with integrated twin-drive subwoofer

360 watts total music power and 9 active drivers

Dolby Atmos, DTS:X and HDMI eARC support

Expandable to discrete 5.1 home cinema via Loewe wireless digital audiolink

Multiroom audio via DTS Play-Fi, Apple AirPlay, Google Cast, Spotify and Roon

Integrated 5.1 home cinema AV receiver with cinch out for external active speakers

Fits perfect to TV sets 43 inch or bigger



LOEWE. was found by the Loewe brothers as Radio Frequenz GmbH in Berlin in 1923.

Today we still design, develop and produce consumer electronics – Made in Germany.

bild – is the German word for picture or image.

klang – is the German word for sound or tone.

Data sheet

Loewe **klang bar3 mr**

December 2024

**LOEWE.**

Home of Excellence.

www.loewe.tv



# Loewe **klang bar3 mr**

Active soundbar with integrated subwoofer



## Powerful cinema sound.

This active 3.1 soundbar with seven front-firing speakers and a built-in twin-drive subwoofer delivers a total music output of 360 watts for a room-filling and natural sound experience - including support of Dolby Atmos, Dolby Atmos Music, DTS:X as well as multiroom via DTS Play-Fi, Apple AirPlay and Google Cast, or via Loewe wireless digital audiolink (second generation) and AV Receiver pre-amp cinch out connections.



## Multichannel and Multiroom.

Three HDMI connections and 4K pass-through leave nothing to be desired when connecting to UHD players, set-top boxes and game consoles. The 5.1 multichannel platform with Dolby Atmos support and the multiroom system with DTS Play-Fi makes expanding the system a breeze. Additionally, Loewe klang mr speakers can be added to the existing setup in seconds.



## Versatile streaming options.

Apple AirPlay 2, Google Chromecast and Bluetooth provide a variety of services such as Spotify, Amazon Music, Tidal, Deezer and Internet radio. Stream your favourite content at the touch of a button.



## Expandable system.

The soundbar can be expanded with additional Loewe klang mr speakers. Within seconds, klang mr1, klang mr3 or klang mr5 can be added wirelessly to an existing setup, whether for multi-channel home cinema, multi-room audio or even both at the same time. At the same time, the system is compatible in all directions thanks to open standards. Whether third-party speakers, Loewe klang 5 or klang 9, or even the former Loewe Individual Sound System with active subwoofers and electrostatic speakers - almost anything can be connected.



## Integrated twin-drive subwoofer.


Enjoy this masterpiece of German engineering for absolute audio pleasure with best clarity and voluminous cinema sound: Two parallel, up-firing subwoofers with 4-inch drivers and bass reflex ports to the left and right provide an ambient, wide and unobtrusive bass foundation, always ready to give the necessary deep punch to strong musical expressions or film explosions.



## Cinch pre-amp outputs.

Using the AVR connections, active speakers and active amplifiers with connected passive speakers of older generations and from any brand can be connected to the Loewe klang bar3 mr without an additional adapter. The speakers connected by cable are conveniently activated via the soundbar.

## Colour

 basalt grey

## Model

klang bar3 mr

## Article

60614

# Loewe **klang bar3 mr**

Active soundbar with integrated subwoofer

---

## Achievements

---



reddot winner 2023



**“The Loewe klang bar3 mr is a smart universal genius.”**

HIFI.DE, 28. May 2023 about klang bar3 mr  
test score 8.2 GOOD

**“The Loewe klang bar3 mr offers a full and dynamic sound image for music and home cinema.”**

HiFi Test, edition 4/2023 about klang bar3 mr  
test score Top Class, 1.0

---

## Roon system

---



**Loewe multi.room supports the music information system Roon. All products within the Loewe multi.room series have received the Roon Tested certification from Roon Labs.**

The Roon Tested certification proves that the Roon music information system can be used in its entirety with Loewe multi.room products. This extends the performance of the Loewe multi.room series and guarantees an outstanding audio experience with the simplest setup and highest reliability.

The Loewe multi.room products are perfectly integrated into Roon and ready to use for an excellent, bit-perfect audio experience. In addition, Roon is an interface for all Roon-compatible devices. Loewe's Roon Tested certification stands for power, flexibility and performance in networked audio, coupled with easy set-up and maximum reliability. This certification is a seal of approval for the seamless integration of audio technology.

For more details visit: <https://roon.app>

# Loewe **klang bar3 mr**

Active soundbar with integrated subwoofer


## Setup solutions

### Loewe floor stand flex

Floor stand for bild v, bild i, bild c and We. SEE in combination with klang bar5 mr and klang bar3 mr  
W x H x D = 54,0 x 73,5 x 54,0 cm  
Weight = 23,5 kg

manually rotatable (+/-45°), concealed cable guide, with equipment board for accessories and adapter for sound bar

#### Colour

 basalt grey



#### Model

floor stand flex

#### Article

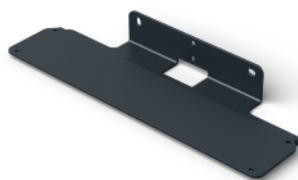
60800

### Loewe wall mount klang bar

Wall mount for mounting the Loewe klang bar5 mr or Loewe klang bar3 mr

W x H x D = 40 x 5 x 13,2 cm  
Weight = 1,2 kg

 black



wall mount klang bar

60810

### Loewe spacer table stand v

Spacer between TV and table stand

W x H x D = 5,2 x 5,7 x 5,2 cm  
Weight = 0,8 kg

 black




spacer table stand v

60811

### Loewe spacer table stand i

Spacer between TV and table stand

W x H x D = 5,3 x 6,3 x 5,3 cm  
Weight = 0,2 kg

 basalt grey



spacer table stand i

60812

# Loewe **klang bar3 mr**

Active soundbar with integrated subwoofer

## System components

### Loewe multi.room amp

Stereo amplifier for multiroom and homecinema installations with 1.200 watts total music power

#### Colour

 black



#### Model


multi.room amp

#### Article

61600

### Loewe klang mr5

Wireless active speakers with 180 watts for multichannel home cinema or multiroom audio

 basalt grey




klang mr5

60606

### Loewe klang mr3

Wireless active speakers with 150 watts for multichannel home cinema or multiroom audio

 basalt grey




klang mr3

60605

### Loewe klang mr1

Wireless active speakers with 30 watts as rear surround or for multiroom audio

 basalt grey




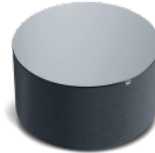
klang mr1

60604

### Loewe klang sub5

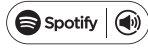
Any number of klang sub5 can be connected to a klang bar3 mr or klang bar5 mr at the same time

 basalt grey



klang sub5

60603



All product and company names are trademarks™ or registered® trademarks of their respective holders. Use of them does not imply any affiliation with or endorsement by them. Google and Chromecast built-in are trademarks of Google LLC.

## Technical data

### Loewe klang

### bar3 mr

#### Audio (acoustic)

Frequency range (Hz) @ ±3 dB	50-20.000
Orientation front / side / up / rear firing	● / ● / ● / —
Acoustic speaker concept	closed bar, twin drive sub, bass reflex
Channel configuration (speaker layout)	3.1 (surround)
Driver total amount	9
Driver active	4x 48 x 90 mm, 3x 0,75", 2x 4"
2-channel crossover	● active

#### Audio (electric)

Frequency range (Hz) @ ±1 dB	20-20.000
Class-D amp	●
Power (watts sine / music)	180 / 360
Total harmonic distortion @ 1 watt / 10 watts	< 0,5
Dynamic range / Signal to noise ratio (dB)	24 bit / > 75
Bass and treble control / loudness	● (remote) / dynamic
Distance adjustment (m)	●
Balance / gain adjustment (dB)	— / ● (+/-6 dB)
Protection circuit: heat / current / voltage / short cut	● / ● / ● / ●
Dolby Audio / Digital / Digital Plus / Volume / Atmos / Atmos Music	● / ● / ● / ● / ● / ●
DTS HD / DTS:X	● / ●

#### Operation and apps

Display technology	White D-LED
Screen resolution (pixels)	5 x 16 segments
Screen diagonal (cm / inch)	6 / 2,4
my Loewe app / smart apps (all: Android + iOS)	● (DTS Play-Fi)
Voice control by Alexa skills	●
Software update (via USB / Internet)	● / ● (DTS Play-Fi)

#### Media and reception

USB music player	●
Bluetooth music player	●
Internet radio	● (via DTS Play-Fi app)
DTS Play-Fi / Hi-Res Audio	● / ●
Spotify Connect / Google Cast / Apple AirPlay	● / ● / ●
Roon tested	●
Multiroom audio support	●
Multichannel home cinema support	●

#### Connectivity and interfaces

HDMI	2 x HDMI 2.0b (incl. 4K pass-through)
HDCP 2.2 / HDMI-CEC / ARC / eARC	● / ● / ● / ●
USB	1 x USB 2.0 (MP3 only)
Bluetooth	●
WLAN (Wi-Fi) integrated	●
Wireless Digital Audiolink (second generation)	●
Optical TOSLINK	●
AV receiver analog pre-amp cinch out 5.1 / 3.1 / 2.1 / 2.0	● / ● / ● / ●
Analogue audio jack in (3.5 mm stereo)	●
Wall mount	○

#### Network and formats

WLAN (Wi-Fi) standard	IEEE 802.11a/b/g/n/ac
WLAN (Wi-Fi) power (max. mW)	<100mW @2400-2485 MHz <200mW @5150-5250 MHz <100mW @5250-5350 MHz <100mW @5470-5725 MHz < 25mW @5725-5875 MHz (SRD)
WLAN (Wi-Fi) encryption	WEP 64, 128 Bit (ASCII, HEX)
WLAN (Wi-Fi) encryption WPA	WPA PSK, WPA2 AES, WPS
Bluetooth standard	5.0 + EDR
Bluetooth power (max. mW)	<10
Bluetooth frequency range	2,4 GHz
Bluetooth protocols	A2DP SNK, AVRCP
Supported audio formats	MP3, AAC, AAC+, M4A, WAV, FLAC, PCM, Dolby True HD, Dolby Audio, Dolby Digital, Dolby, Digital Plus, Dolby Atmos, Dolby Atmos Music, DTS, DTS HD, DTS Virtual X, DTS Play-Fi, Hi-Res AUDIO 4K Video Pass-Through, Dolby Vision, HDR10, HDR10+
Supported video formats	

#### Energy and environment

Mains voltages AC	100-240V, 50/60 Hz
Power consumption eco standby mode (watts)	0,5
Power consumption multiroom sleep mode (watts)	6
Ambient temperature while in operation	5-35° C
Relative humidity (non-condensing)	20-80%

#### Dimensions

Weight (approx. kg)	5,9
W* x H x D (approx. cm)	95,0 x 7,1 x 16,0

#### Scope of Delivery

Remote control (incl. batteries)	Loewe remote klang mr (2x CR2032)
Manual / power cord	● / ●
Others	HDMI cable

#### Optional accessories

Selection of recommended setup solutions and audio systems	bild i, floor stand flex, spacer table stand v, spacer table stand i, wall mount klang bar, klang mr5, klang mr3, klang mr1, klang sub5
--	---

● = available, ○ = optional, — = not available

Technical changes and delivery options are subject to change without notice. The product portfolio may be different and might vary depending on the country. Service matters are all handled individually.

Data sheet

Loewe **klang bar3 mr**

December 2024